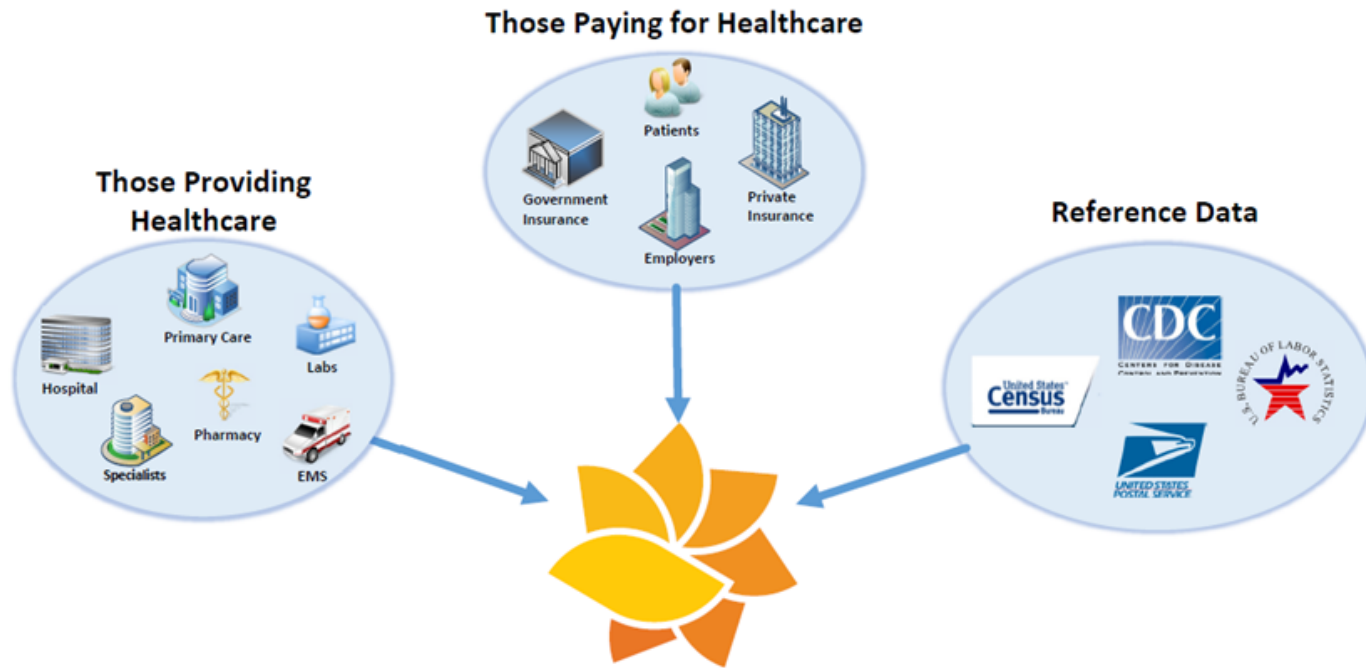


THE HEALTH  COLLABORATIVE

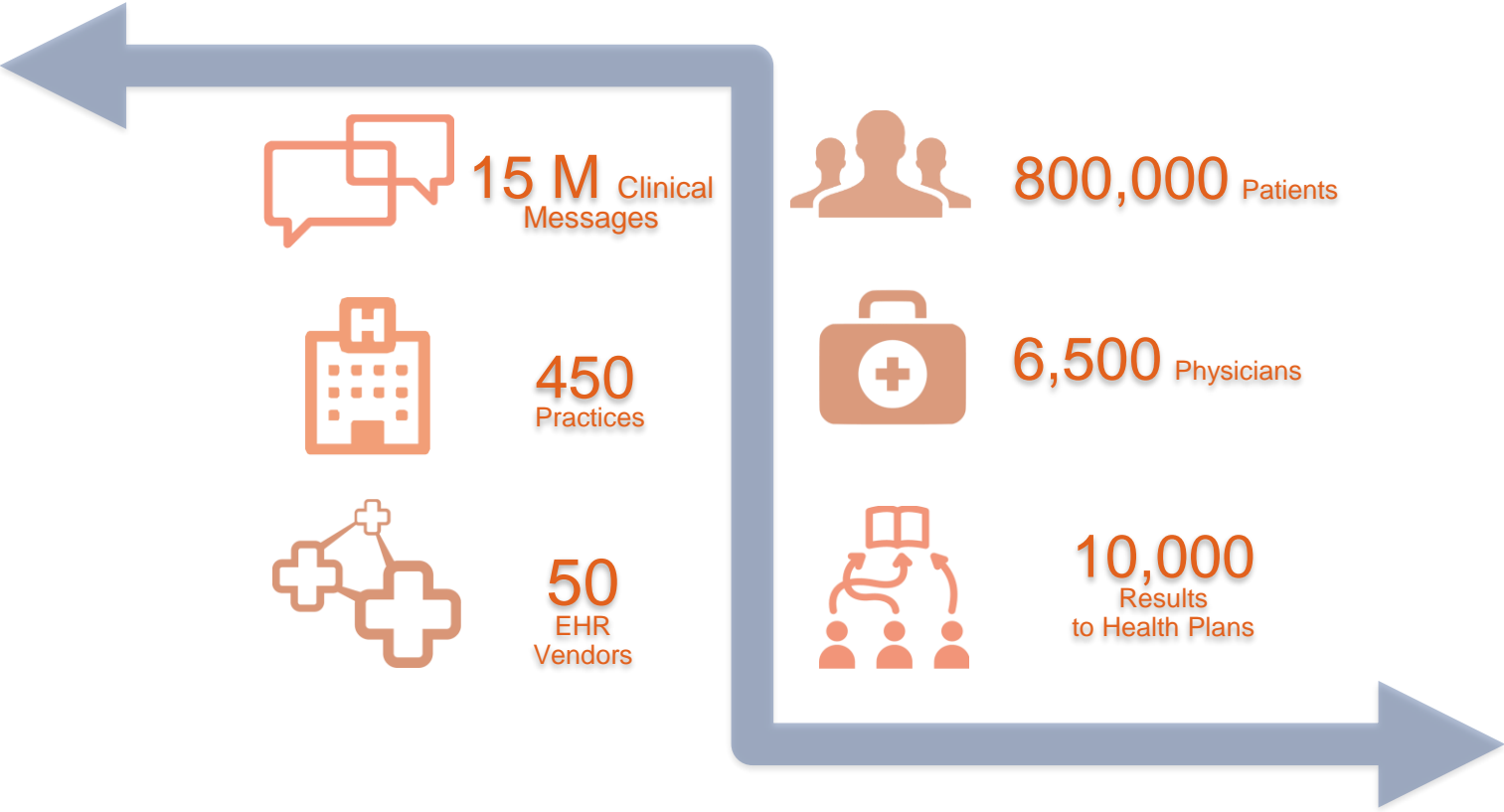
Infant Mortality & Health Information Exchange

Jason Buckner, SVP, Informatics
@jbuckner72

Technology Strategy



Clinical Data: Monthly Stats



hb/suite

TECHNOLOGY POWERED BY HEALTHBRIDGE

hb/360

hb/exchange

hb/results

hb/messaging

hb/EHR

hb/HEDIS

hb/public health

hb/fax

hb/analytics

hb/pop health

hb/rads

hb/identity

hb/meds

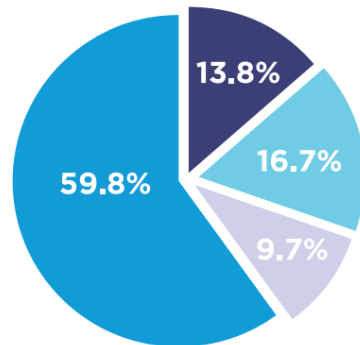
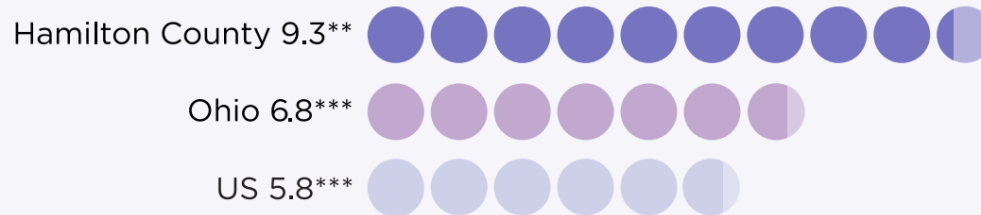
hb/notify

hb/direct



- Pathway HUB in Hamilton County
- Focus on ensuring patients can locate and enroll in
 - Primary Care Physicians
 - Health Insurance
 - Pregnancy Care Coordination

Infant deaths per 1000 live births



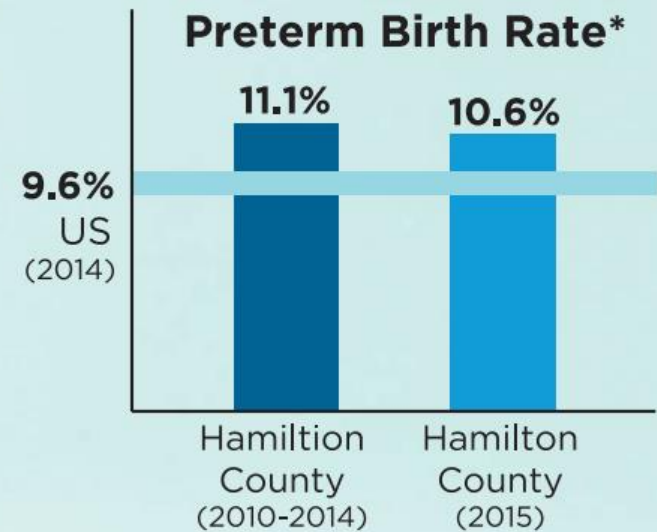
Cause of Death 2011-2015****

- Preterm Birth
- Sleep-related Deaths
- Birth Defects
- Other

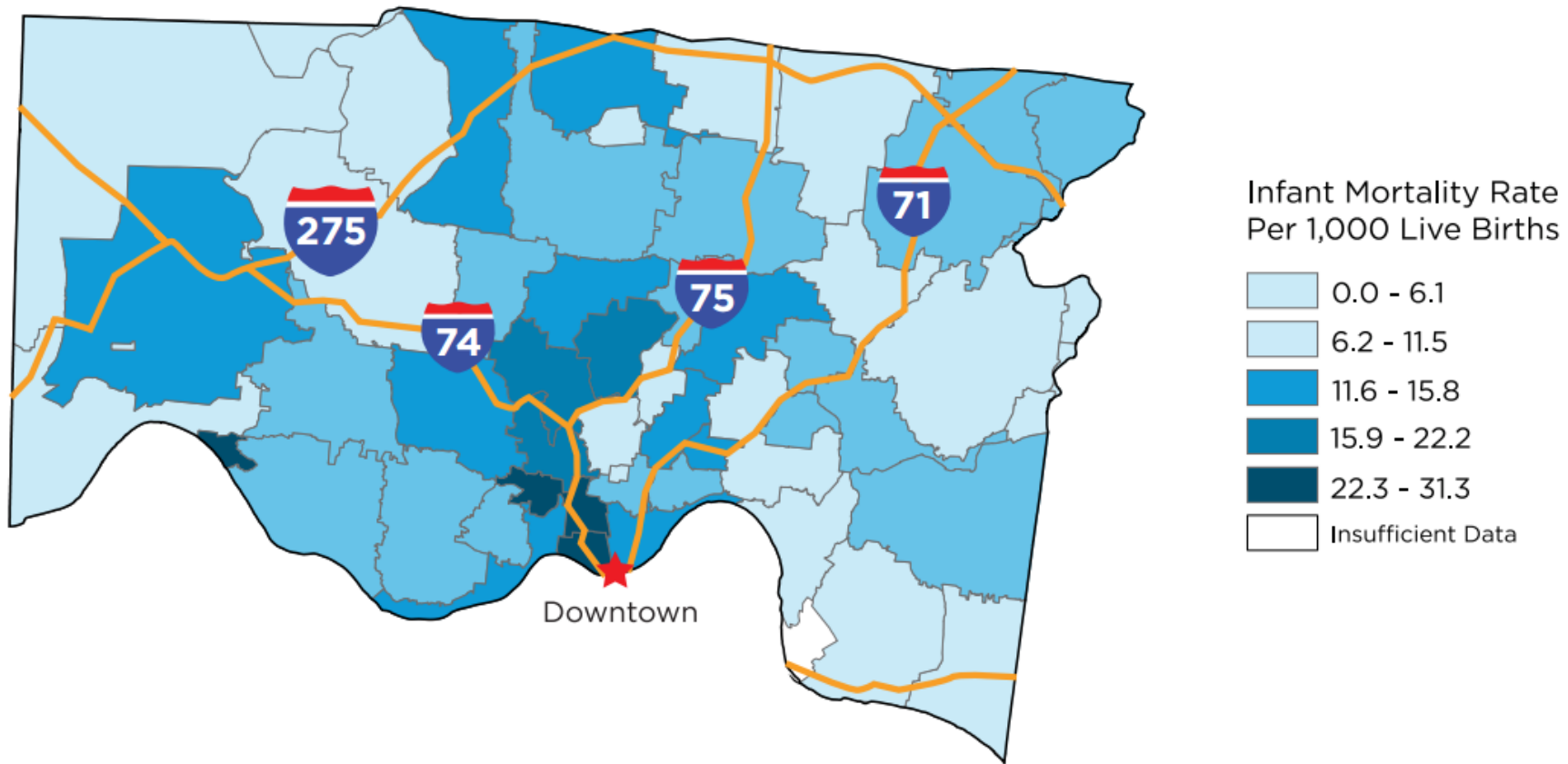
*Source: CDC Wonder, comparing our 2011-2015 rate to the 2011-2013 rate of communities throughout the US
 **2011-2015; Source: Fetal and Infant Mortality Review, Ohio Department of Health Vital Statistics, 2015 data is provisional
 ***2014; Source: Ohio Department of Health, CDC
 ****Source: Fetal and Infant Mortality Review

We need more babies born on time.

Preterm birth is the leading cause of infant mortality in Hamilton County. The good news is it's moving in the right direction. More than 50 fewer babies were born too early in 2015 than in previous years.



Hamilton County Infant Mortality Rate by Zip Code 2011-2015



African
American

16.3



White

5.9



Hispanic

4.8



**2011-2015 deaths per
thousand live births***

HIE Assistance

hb/notify

- Provider or Care Coordination based organization provides a *patient panel* and THC notifies them in real time if a patient arrives at a hospital
- HCAN participates along with 25+ organizations

hb/identity

- THC identifies all patient births in the community and ensures Pediatric organizations are notified appropriately
- Complex baby to mother matching algorithms to ensure identification and relationship established